

EVRAZ manufactures a variety of premium rail in standard lengths of up to 80 feet (25 meters) at its facility in Pueblo, Colorado. Delivery options include rail car, truckload and maritime service. Product specifications for Standard Rail follow.

DIMENSIONS	115RE	119RE	132RE	133RE	136RE
Lb./Ft.	38.3	39.6	44.0	44.3	45.3
Height	6.610" - 6.655"	6.797" - 6.842"	7.110" - 7.155"	7.047" - 7.092"	7.297" - 7.342"
Base Width	5.460" - 5.540"	5.460" - 5.540"	5.960" - 6.040"	5.960" - 6.040"	5.960" - 6.040"
Head Width	2.694" - 2.744"	2.631" - 2.681"	2.975" - 3.025"	2.975" - 3.025"	2.913" - 2.963"
Web Thickness	0.605" - 0.665"	0.605" - 0.665"	0.636" - 0.696"	0.668" - 0.728"	0.668" - 0.728"

CHEMICAL COMPOSITION	C	Mn	P	S	Si	Ni	Cr	Mo	V
	0.74-0.86	0.75-1.25	0.020 max	0.020 max	0.10-0.60	0.25 max	0.30 max	0.060 max	0.010 max

MECHANICAL PROPERTIES (min.)	Yield Strength	Ultimate Tensile Strength	Elongation (min)
	74,000 psi	142,500 psi	10%

MATERIAL TEST REPORTS

Chemical Composition, BHN Hardness (BHN)

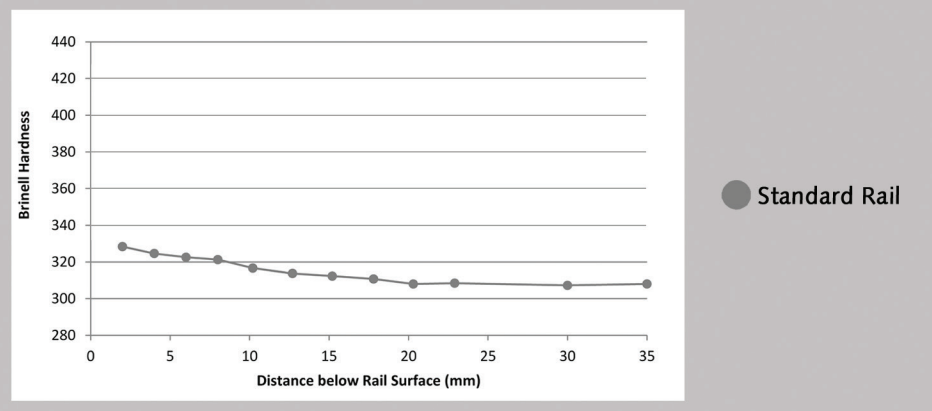
MANUFACTURING FEATURES

EVRAZ Rocky Mountain Steel produces steel in an Electric Arc Furnace (EAF) melt shop, which features hydrogen removal through Vacuum Tank Degassing (VTD) and continuous billet casting. The rail facility utilizes a second generation in-line head hardening system and Line Slack Quench (LSQ), which employs air as the quenching medium. This technology achieves superior hardness at depth and consistently exceeds AREMA requirements for surface hardness. Other operational features include advanced ProfileCheck technology and a new state-of-the-art non-destructive testing (NDT) suite to help ensure exact symmetrical tolerances and high quality.

APPLICATIONS

Typical applications for Standard Rail are: light curves up to approximately 2 degrees; tangent track; rail lines with 50-80 million gross tons (MGT) per year; transit systems; and other applications for which the physical and mechanical properties of standard and intermediate hardness strength rail are suited.

RAIL HARDNESS (AS A FUNCTION OF DEPTH)



EVRAZ Rocky Mountain Steel
 1612 E. Abriendo Avenue
 Pueblo, CO 81004
 866-966-6854 (toll-free)
 719-561-6000 (main)
 railsales@evrazna.com

www.evrazna.com